

NOTE:
 ① BOLT POSITION INDICATORS: * JACKING BOLTS
 ⊕ ANCHOR BOLTS
 ANCHOR BOLTS ARE 3/4 - 10 THREAD.
 ② WEIGHT OF 24" THICK FOUNDATION APPROXIMATELY 22,000 LBS.
 ③ NET WEIGHT OF MACHINE APPROXIMATELY 20,000 LBS.
 ④
 ⑤ A MINIMUM OF 24" THICK REINFORCED CONCRETE IS SUGGESTED FOR ADEQUATE SUPPORT. SUPPORT UNDER SLAB MUST ALSO BE ADEQUATE. (SUGGESTED REINFORCEMENT - 3 LAYERS, SPACED 6" APART, 1/2" DIA. REBAR ARRANGED IN A 12 IN. SQUARE PATTERN)
 ⑥ HEIGHT OF MACHINE, 141".

FRONT

MACHINE OPERATOR AND LOADING WORK AREA. 5 FT MINIMUM IS RECOMMENDED FOR FRONT.

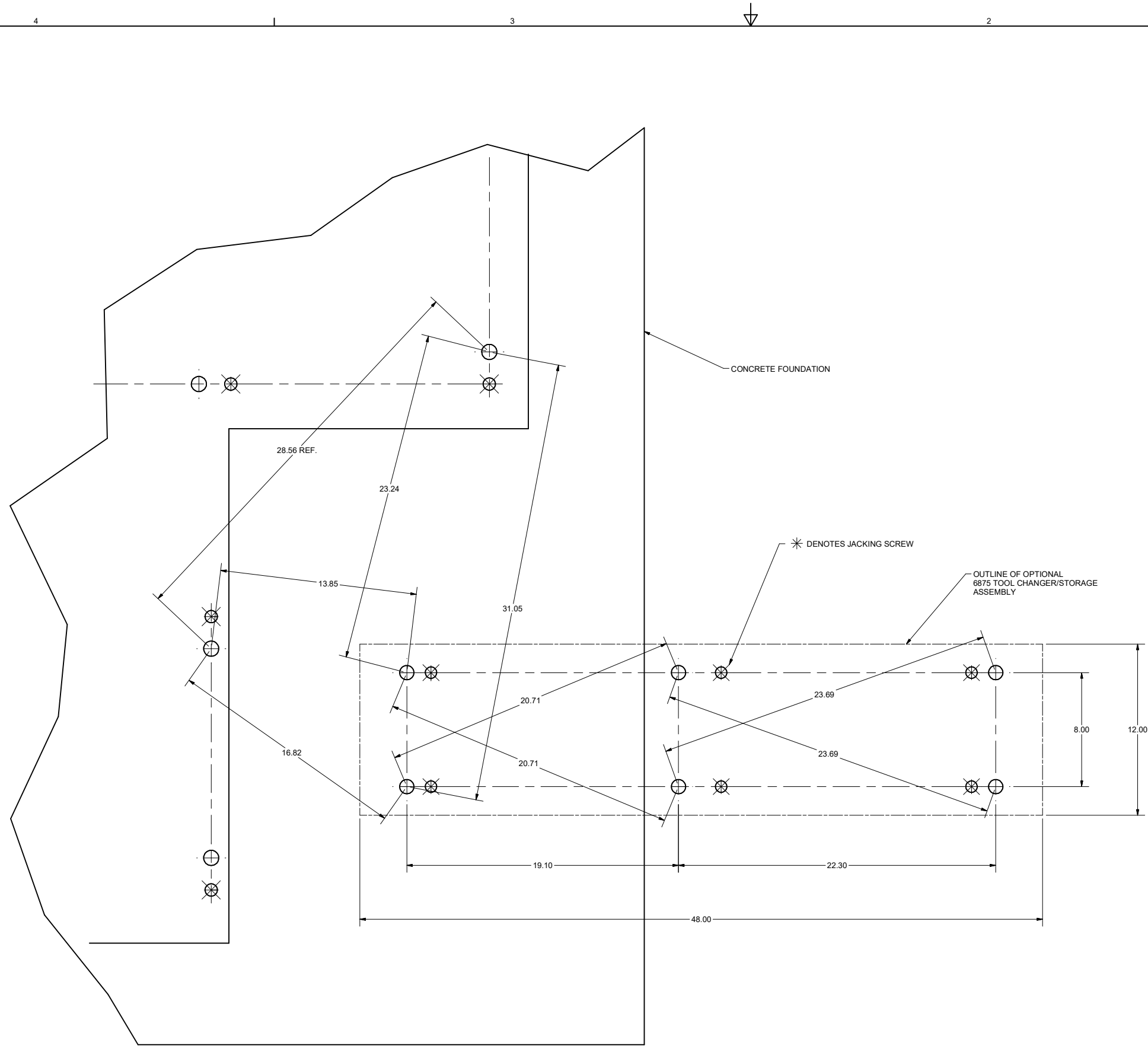
POWER REQUIRED:
 ELECTRICAL - 208/240 VOLT
 3 PHASE, 60 Hz
 60 A SERVICE
 LINE VOLTAGE VARIATION
 ± 5% OF RATED
 (CLOSED DELTA)
 AIR - 95/100 PSI
 3C.F.M.

6161P SHEET 1 OF 3

Paint:	2	8/18/2017	KEVIN	ADDED SHEET 3
Mass: 12706.169 lbmass	1	1/13/2015	Anthony	REMOVED MAX WORKPIECE WEIGHT NOTE 4. UPDATED THE APPROXIMATE WEIGHT OF MACHINE
HEAT TREAT: None	REV	TODAY'S	REQUEST	DESCRIPTION
MATERIAL:				

TOLERANCES UNLESS NOTED DECIMALS			2
1 PLACE ± .05	2 PLACE ± .01		
3 PLACE ± .001	3 PLACE ± .001		
HOLD DOWN AND JACKING BOLT LOCATIONS, MACHINE BED EM105		DRWN: Shawn	SCALE: 1:8
ANGLES ± 5'		DATE: 12/2013	DRAWING NO. 6161P
FINISH 125			

6161P SHEET 1 OF 3



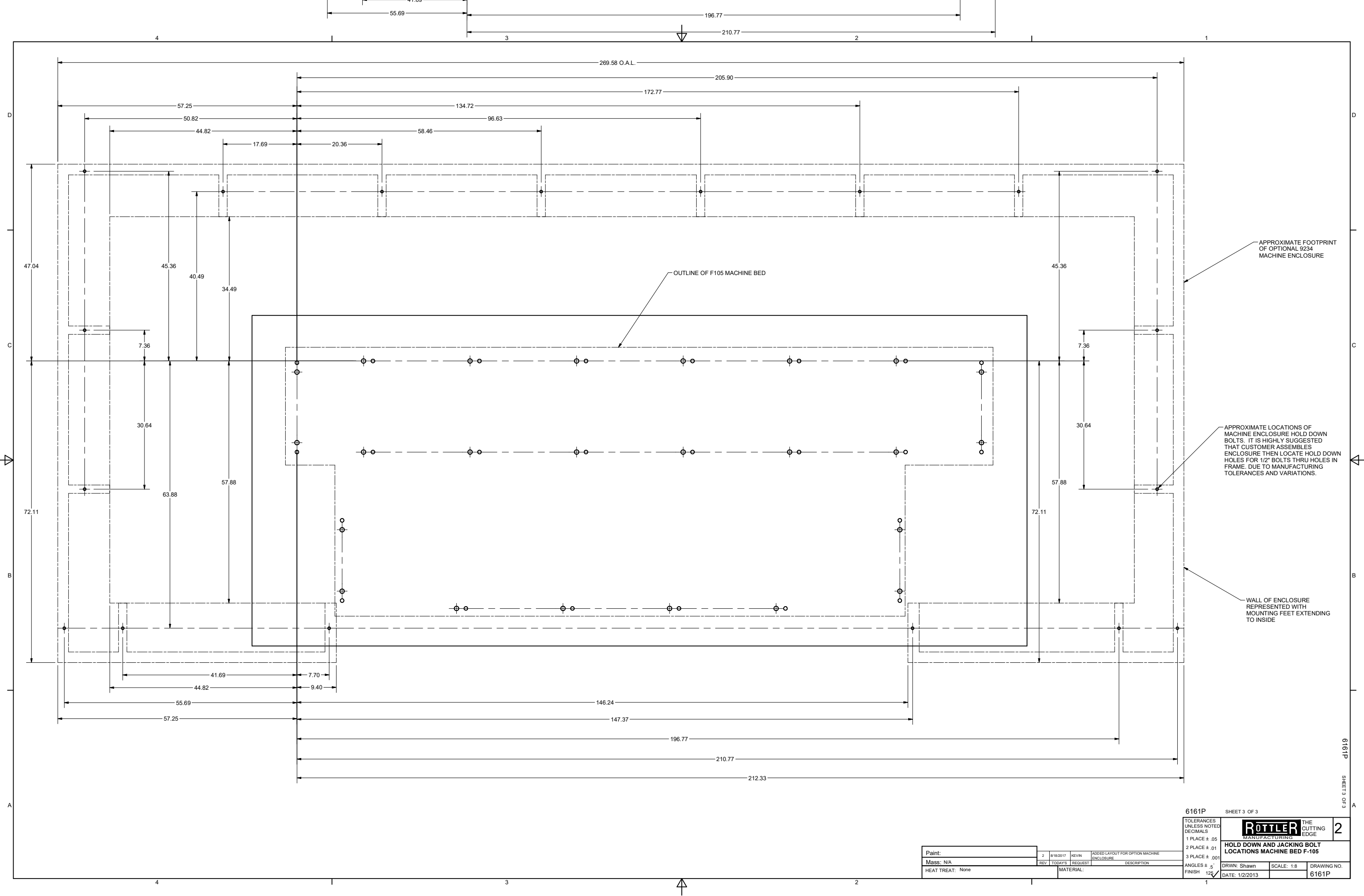
DETAIL A
SCALE 1/4

Paint:	2	8/18/2017	KEVIN	ADDED SHEET 3
Mass: 12706.169 lbmass	1	1/13/2015	ANTHONY	SEE SHEET 1
HEAT TREAT: None	REV	TODAYS	REQUEST	DESCRIPTION
			MATERIAL:	

6161P SHEET 2 OF 3

TOLERANCES UNLESS NOTED DECIMALS		2
1 PLACE ± .05		
2 PLACE ± .01		
3 PLACE ± .001	HOLD DOWN AND JACKING BOLT LOCATIONS, MACHINE BED EM105	
ANGLES ± 5'	DRWN: Shawn	SCALE: 1:8
FINISH 125	DATE: 1/2/2013	DRAWING NO. 6161P

6161P SHEET 2 OF 3



APPROXIMATE FOOTPRINT OF OPTIONAL 9234 MACHINE ENCLOSURE

OUTLINE OF F105 MACHINE BED

APPROXIMATE LOCATIONS OF MACHINE ENCLOSURE HOLD DOWN BOLTS. IT IS HIGHLY SUGGESTED THAT CUSTOMER ASSEMBLES ENCLOSURE THEN LOCATE HOLD DOWN HOLES FOR 1/2" BOLTS THRU HOLES IN FRAME. DUE TO MANUFACTURING TOLERANCES AND VARIATIONS.

WALL OF ENCLOSURE REPRESENTED WITH MOUNTING FEET EXTENDING TO INSIDE

6161P SHEET 3 OF 3

6161P		SHEET 3 OF 3	
TOLERANCES UNLESS NOTED DECIMALS			
1 PLACE ± .05			
2 PLACE ± .01			
3 PLACE ± .001		HOLD DOWN AND JACKING BOLT LOCATIONS MACHINE BED F-105	
DRWN: Shawn	SCALE: 1:8	DRAWING NO. 6161P	
DATE: 1/2/2013			

Paint:	2	8/18/2017	KEVIN	ADDED LAYOUT FOR OPTION MACHINE ENCLOSURE
Mass: N/A	REV	TODAYS	REQUEST	DESCRIPTION
HEAT TREAT: None	MATERIAL:			