



7241R ECONOMY HEAD FIXTURE

OPERATION AND MAINTENANCE MANUAL



ORDERING PROCEDURE

Contact your regional Rottler sales rep for assistance in ordering optional equipment, replacement parts, or tooling.

If you are unable to contact your regional Rottler sales rep, call the factory at 253-872-7050 and ask to speak to the parts sales specialist.

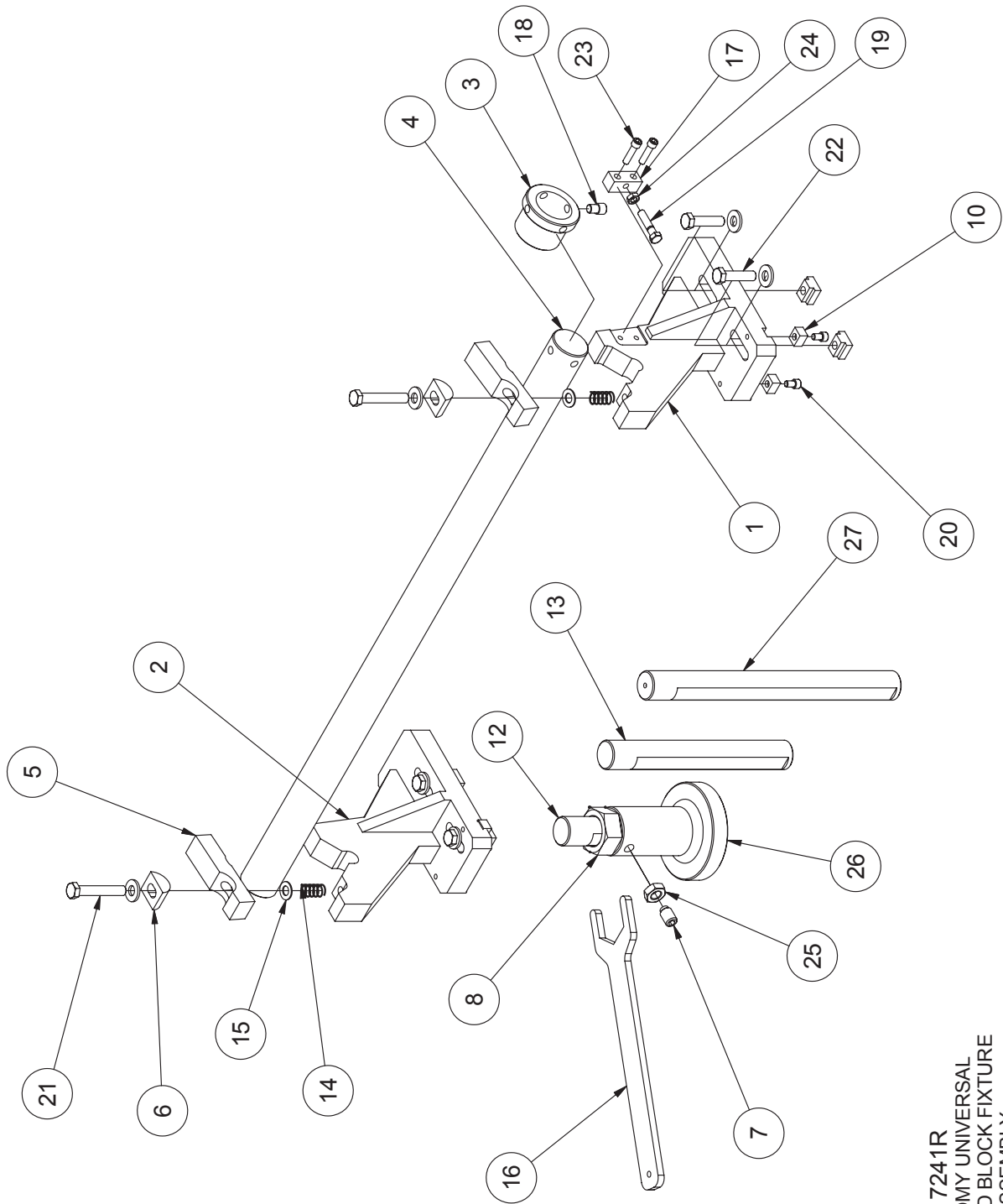
Have the following information handy to expedite the ordering process:

1. Your name, business name, and contact number
2. Customer number
3. If you don't have a customer number, your billing address
4. Shipping address if different from billing address
5. Machine model and serial number
6. Part number and description of what you want to order
7. Preferred method of shipment
8. You may also contact us via e-mail with the above information. Send e-mail requests to:
parts@rottlermfg.com or intlpart@rottlermfg.com

In some cases you may be requested to send a photo of the part you are ordering if it is a replacement part, or doesn't appear in the database.

If you are unsure which part you need to order, contact our service department and ask to speak to one of our service consultants. They will assist you in determining which part you require.

THERE IS A MINIMUM ORDER OF \$25.00



7241R
ECONOMY UNIVERSAL
HEAD AND BLOCK FIXTURE
ASSEMBLY
F MACHINE APPLICATION

7241R ECONOMY UNIVERSAL BLOCK FIXTURE ASSEMBLY F MACHINE APPLICATION			
ITEM	QTY	PART NUMBER	DESCRIPTION
1	1	7241L	SUPPORT, RIGHT, F60 ECONOMY HEAD & BLOCK FIXTURE
2	1	7241K	Left Support
3	1	7241D	Cam Bushing
4	1	7241E	LOCATOR BAR, ECONOMY HEAD AND BLOCK FIXTURE
5	2	7241F	CLamp Finger
6	2	7241G	PIVOT
7	1	6395B	5/8-11 Half Dog 1" long SET SCREW
8	1	6566H	Jacking Nut
9	4	650-3-10	TN-5 T-Nut
10	4	650-3-9	Key
11	6	100-19A	Hardened washer 17/32 I.D.
12	1	6396	JACKING SCREW 7" LG.
13	1	6396A	JACKING SCREW 11-1/4" LG.
14	2	502-2-11F	Spring
15	2	100-19	Washer
16	1	6566K	WRENCH, JACKING NUT - DIESEL FIXTURING
17	1	6451Q	Block, Adjusting Belt, Servo Motor
18	1	7241X	7/16-14 CAPSCREW REWORK
19	1	7241Y	STOP - CAM BUSHING
20	4	MF21A	Hexagon Socket Head Cap Screw
21	2	MF-150B	1/2-13UNC x 3" LG. HEX BOLT
22	4	MF-149C	1/2-13UNC x 2" LG. HEX BOLT
23	2	MF-24	S.H.C.S. 5/16 - 18 UNC - 1 1/4
24	1	MF-167	3/8-16UNC HEX JAM NUT
25	1	502-1-12G	5/8-11UNC HEX JAM NUT
26	1	6395D	JACK BODY
27	1	6396B	JACKING SCREW 15-1/2" LG.