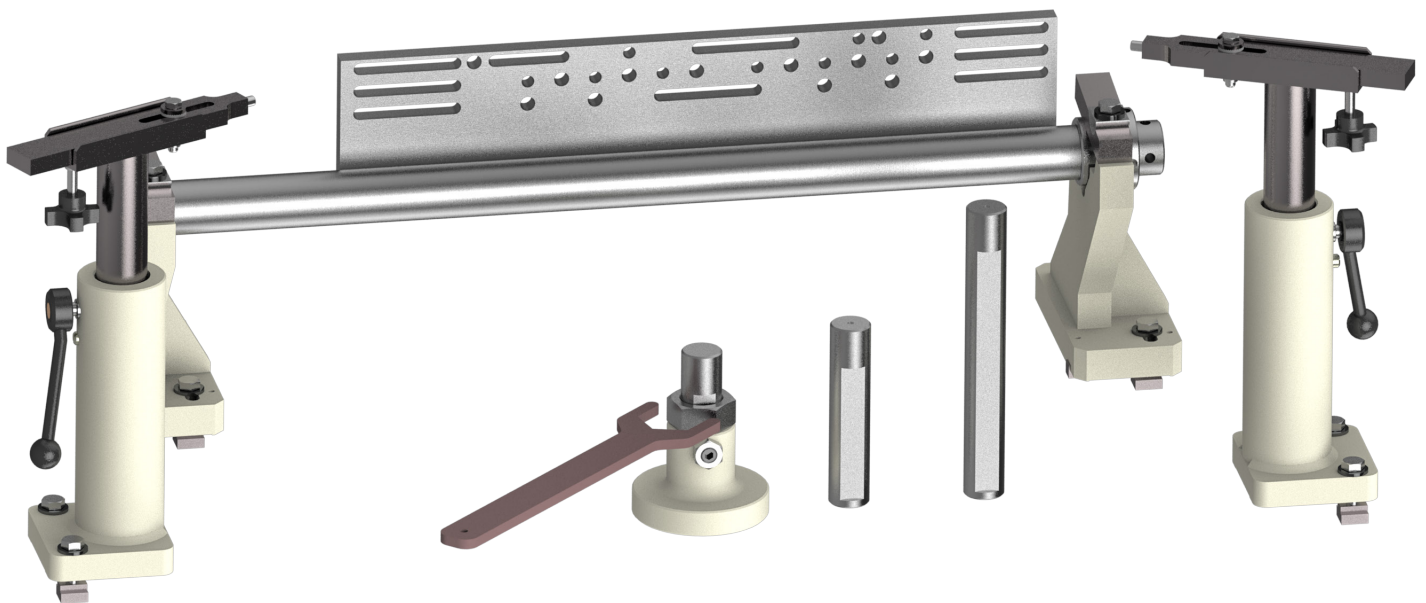




7241P UNIVERSAL FIXTURE

OPERATION AND MAINTENANCE MANUAL



ORDERING PROCEDURE

Contact your regional Rottler sales rep for assistance in ordering optional equipment, replacement parts, or tooling.

If you are unable to contact your regional Rottler sales rep, call the factory at 253-872-7050 and ask to speak to the parts sales specialist.

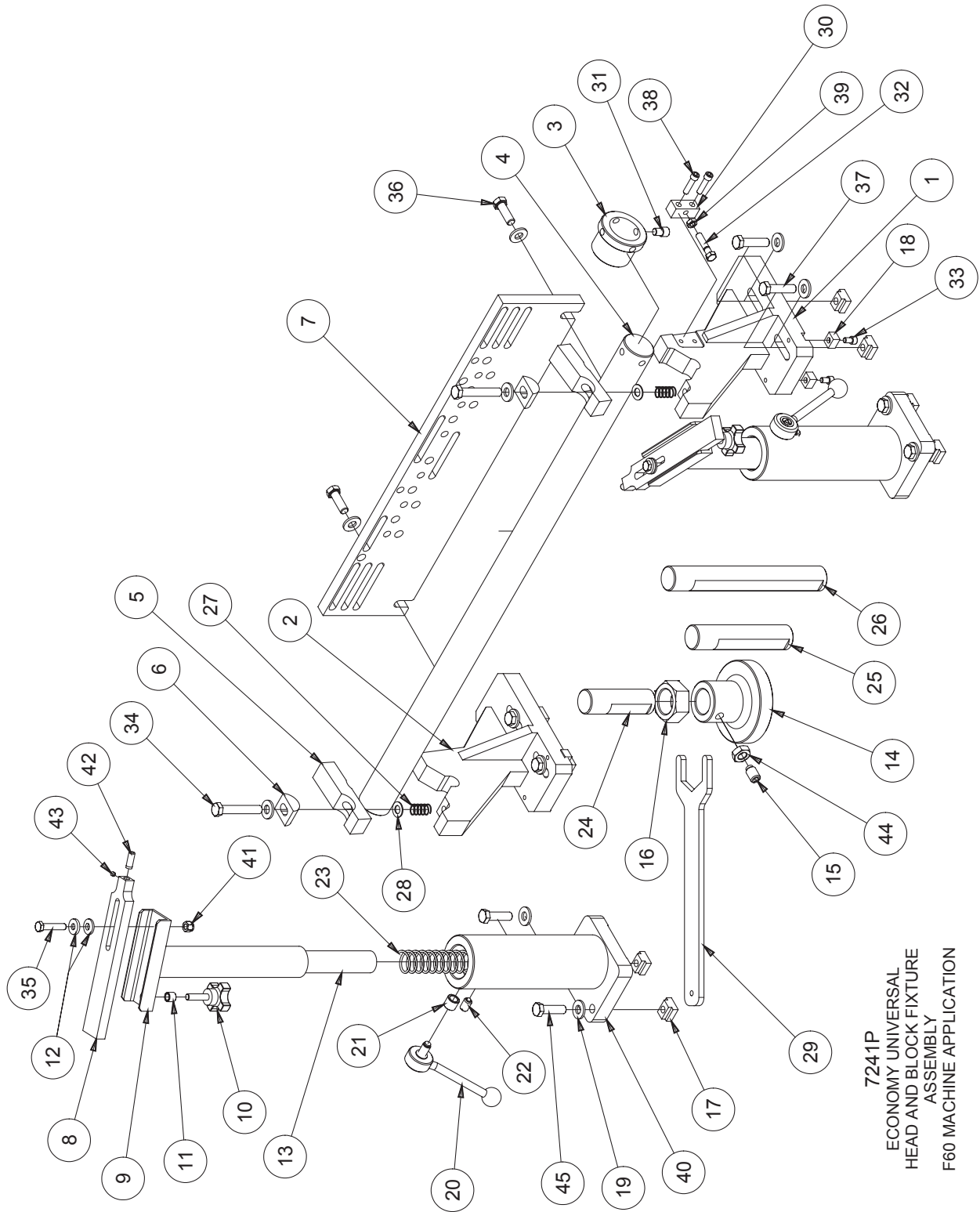
Have the following information handy to expedite the ordering process:

1. Your name, business name, and contact number
2. Customer number
3. If you don't have a customer number, your billing address
4. Shipping address if different from billing address
5. Machine model and serial number
6. Part number and description of what you want to order
7. Preferred method of shipment
8. You may also contact us via e-mail with the above information. Send e-mail requests to:
parts@rottlermfg.com or intlpart@rottlermfg.com

In some cases you may be requested to send a photo of the part you are ordering if it is a replacement part, or doesn't appear in the database.

If you are unsure which part you need to order, contact our service department and ask to speak to one of our service consultants. They will assist you in determining which part you require.

THERE IS A MINIMUM ORDER OF \$25.00



7241P ECONOMY UNIVERSAL HEAD AND BLOCK FIXTURE ASSEMBLY			
ITEM	QTY	PART NUMBER	DESCRIPTION
1	1	7241L	SUPPORT, RIGHT, F60 ECONOMY HEAD & BLOCK FIXTURE
2	1	7241K	Left Support
3	1	7241D	Cam Bushing
4	1	7241E	LOCATOR BAR, ECONOMY HEAD AND BLOCK FIXTURE
5	2	7241F	CLamp Finger
6	2	7241G	PIVOT
7	1	7241H	Mount Plate
8	2	7242E	SHOE, CLAMP - CLAMP TOWER SF-8
9	2	7242F	Clamp Tower Leg
10	2	7242H	Knob
11	2	7242J	Thread Insert 3/8-16
12	2	7242K	SPHERICAL WASHER SET
13	2	7242L	Spacer Tube
14	1	7241Q	JACK BODY, ECONOMY FIXTURE F60 SERIES
15	1	6395B	5/8-11 Half Dog 1" long SET SCREW
16	1	6566H	Jacking Nut
17	8	650-3-10	TN-5 T-Nut
18	4	650-3-9	Key
19	12	100-19A	Hardened washer 17/32 I.D.
20	2	6310N	HANDLE ASSEMBLY, CLAMP TOWER - F80
21	2	6310R	Thread Insert
22	2	502-8-52C	Spring Plunger
23	2	650-3-49M	Spring
24	1	7241N	JACKING SCREW 4-3/4" LG.
25	1	6396	JACKING SCREW 7" LG.
26	1	6396A	JACKING SCREW 11-1/4" LG.
27	2	502-2-11F	Spring
28	2	100-19	Washer
29	1	6566K	WRENCH, JACKING NUT - DIESEL FIXTURING
30	1	6451Q	Block, Adjusting Belt, Servo Motor
31	1	7241X	7/16-14 CAPSCREW REWORK
32	1	7241Y	STOP - CAM BUSHING
33	4	MF21A	Hexagon Socket Head Cap Screw
34	2	MF-150B	1/2-13UNC x 3" LG. HEX BOLT
35	2	MF-145	3/8-16UNC x 1-3/4" LG. HEX BOLT
36	2	MF-150A	1/2-13UNC x 1-1/2" LG. HEX BOLT
37	4	MF-149C	1/2-13UNC x 2" LG. HEX BOLT
38	2	MF-24	S.H.C.S. 5/16 - 18 UNC - 1 1/4
39	1	MF-167	3/8-16UNC HEX JAM NUT
40	2	7242	BASE, CLAMP TOWER (10.9" TALL) ECONOMY HEAD AND BLOCK FIXTURE
41	2	MF-187B	3/8-16UNC NYLOCK NUT
42	2	MF-212	3/8"x 1" LG. DOWEL PIN
43	2	MF-58	1/4-20UNC x 1/4" LG. FLAT POINT SET SCREW
44	1	502-1-12G	5/8-11UNC HEX JAM NUT
45	4	MF-137F	1/2-13UNC x 1-3/4" LG. HEX BOLT