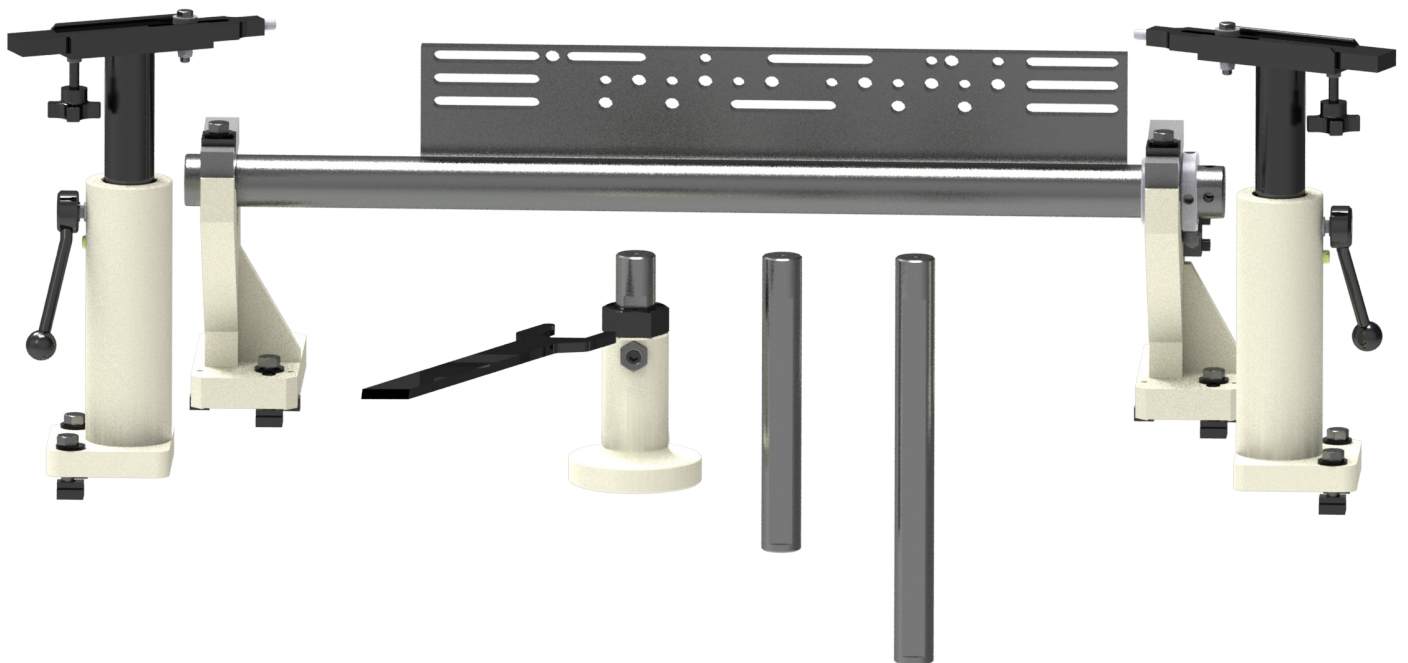




7241 ECONOMY HEAD FIXTURE

OPERATION AND MAINTENANCE MANUAL



ORDERING PROCEDURE

Contact your regional Rottler sales rep for assistance in ordering optional equipment, replacement parts, or tooling.

If you are unable to contact your regional Rottler sales rep, call the factory at 253-872-7050 and ask to speak to the parts sales specialist.

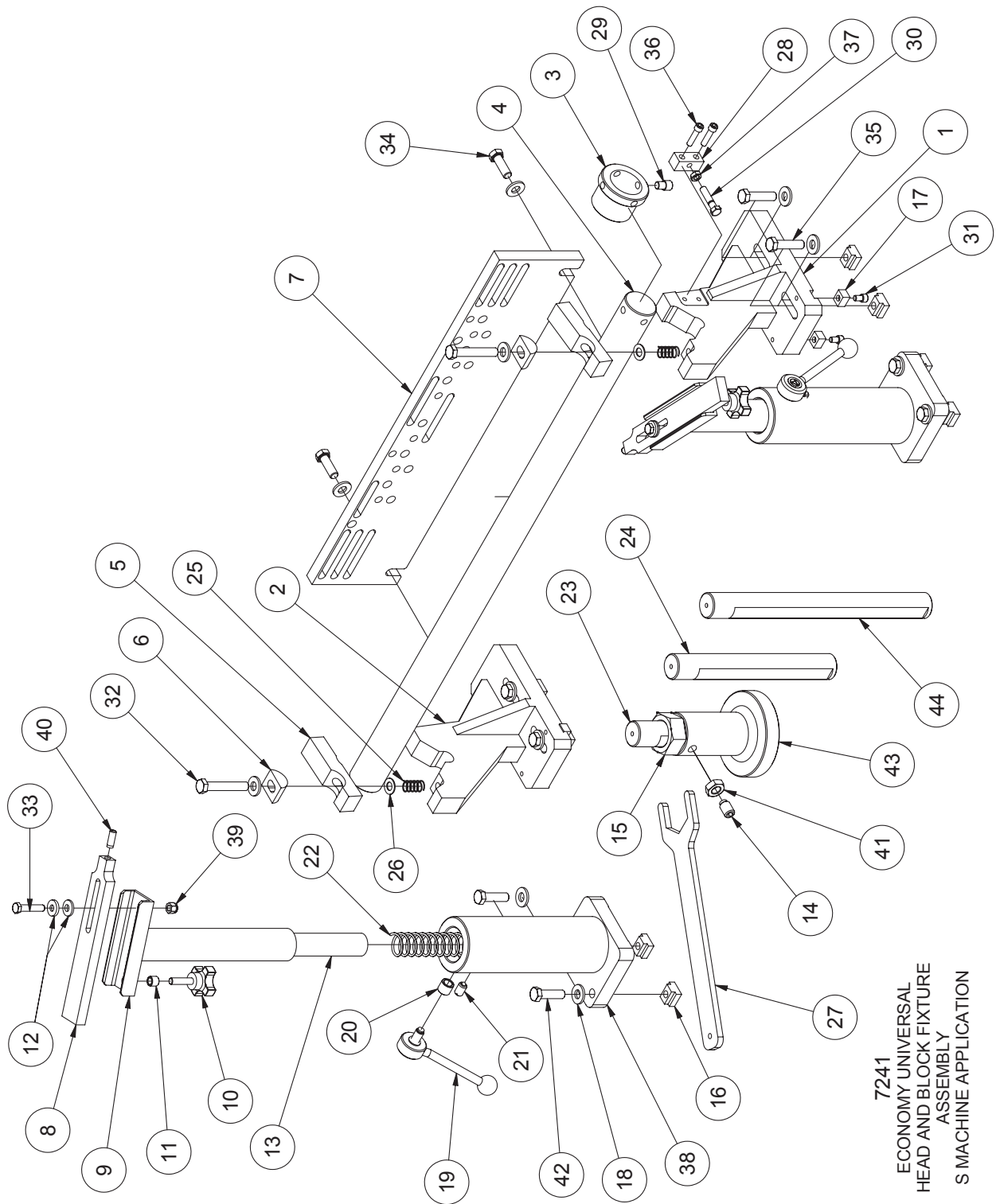
Have the following information handy to expedite the ordering process:

1. Your name, business name, and contact number
2. Customer number
3. If you don't have a customer number, your billing address
4. Shipping address if different from billing address
5. Machine model and serial number
6. Part number and description of what you want to order
7. Preferred method of shipment
8. You may also contact us via e-mail with the above information. Send e-mail requests to:
parts@rottlermfg.com or intlpart@rottlermfg.com

In some cases you may be requested to send a photo of the part you are ordering if it is a replacement part, or doesn't appear in the database.

If you are unsure which part you need to order, contact our service department and ask to speak to one of our service consultants. They will assist you in determining which part you require.

THERE IS A MINIMUM ORDER OF \$25.00



7241
ECONOMY UNIVERSAL
HEAD AND BLOCK FIXTURE
ASSEMBLY
S MACHINE APPLICATION

7241 ECONOMY UNIVERSAL HEAD AND BLOCK FIXTURE ASSEMBLY S7/S8			
ITEM	QTY	PART NUMBER	DESCRIPTION
1	1	7241L	SUPPORT, RIGHT, F60 ECONOMY HEAD & BLOCK FIXTURE
2	1	7241K	Left Support
3	1	7241D	Cam Bushing
4	1	7241E	LOCATOR BAR, ECONOMY HEAD AND BLOCK FIXTURE
5	2	7241F	CLamp Finger
6	2	7241G	PIVOT
7	1	7241H	Mount Plate
8	2	7242E	SHOE, CLAMP - CLAMP TOWER SF-8
9	2	7242F	Clamp Tower Leg
10	2	7242H	Knob
11	2	7242J	Thread Insert 3/8-16
12	2	7242K	SPHERICAL WASHER SET
13	2	7242L	Spacer Tube
14	1	6395B	5/8-11 Half Dog 1" long SET SCREW
15	1	6566H	Jacking Nut
16	8	650-3-10	TN-5 T-Nut
17	4	650-3-9	Key
18	12	100-19A	Hardened washer 17/32 I.D.
19	2	6310N	HANDLE ASSEMBLY, CLAMP TOWER - F80
20	2	6310R	Thread Insert
21	2	502-8-52C	Spring Plunger
22	2	650-3-49M	Spring
23	1	6396	JACKING SCREW 7" LG.
24	1	6396A	JACKING SCREW 11-1/4" LG.
25	2	502-2-11F	Spring
26	2	100-19	Washer
27	1	6566K	WRENCH, JACKING NUT - DIESEL FIXTURING
28	1	6451Q	Block, Adjusting Belt, Servo Motor
29	1	7241X	7/16-14 CAPSCREW REWORK
30	1	7241Y	STOP - CAM BUSHING
31	4	MF21A	Hexagon Socket Head Cap Screw
32	2	MF-150B	1/2-13UNC x 3" LG. HEX BOLT
33	2	MF-145	3/8-16UNC x 1-3/4" LG. HEX BOLT
34	2	MF-150A	1/2-13UNC x 1-1/2" LG. HEX BOLT
35	4	MF-149C	1/2-13UNC x 2" LG. HEX BOLT
36	2	MF-24	S.H.C.S.5/16 - 18 UNC - 1 1/4
37	1	MF-167	3/8-16UNC HEX JAM NUT
38	2	7242	BASE, CLAMP TOWER (10.9" TALL) ECONOMY HEAD AND BLOCK FIXTURE
39	2	MF-187B	3/8-16UNC NYLOCK NUT
40	2	MF-212	3/8"x 1" LG. DOWEL PIN
41	1	502-1-12G	5/8-11UNC HEX JAM NUT
42	4	MF-137F	1/2-13UNC x 1-3/4" LG. HEX BOLT
43	1	6395D	JACK BODY
44	1	6396B	JACKING SCREW 15-1/2" LG.