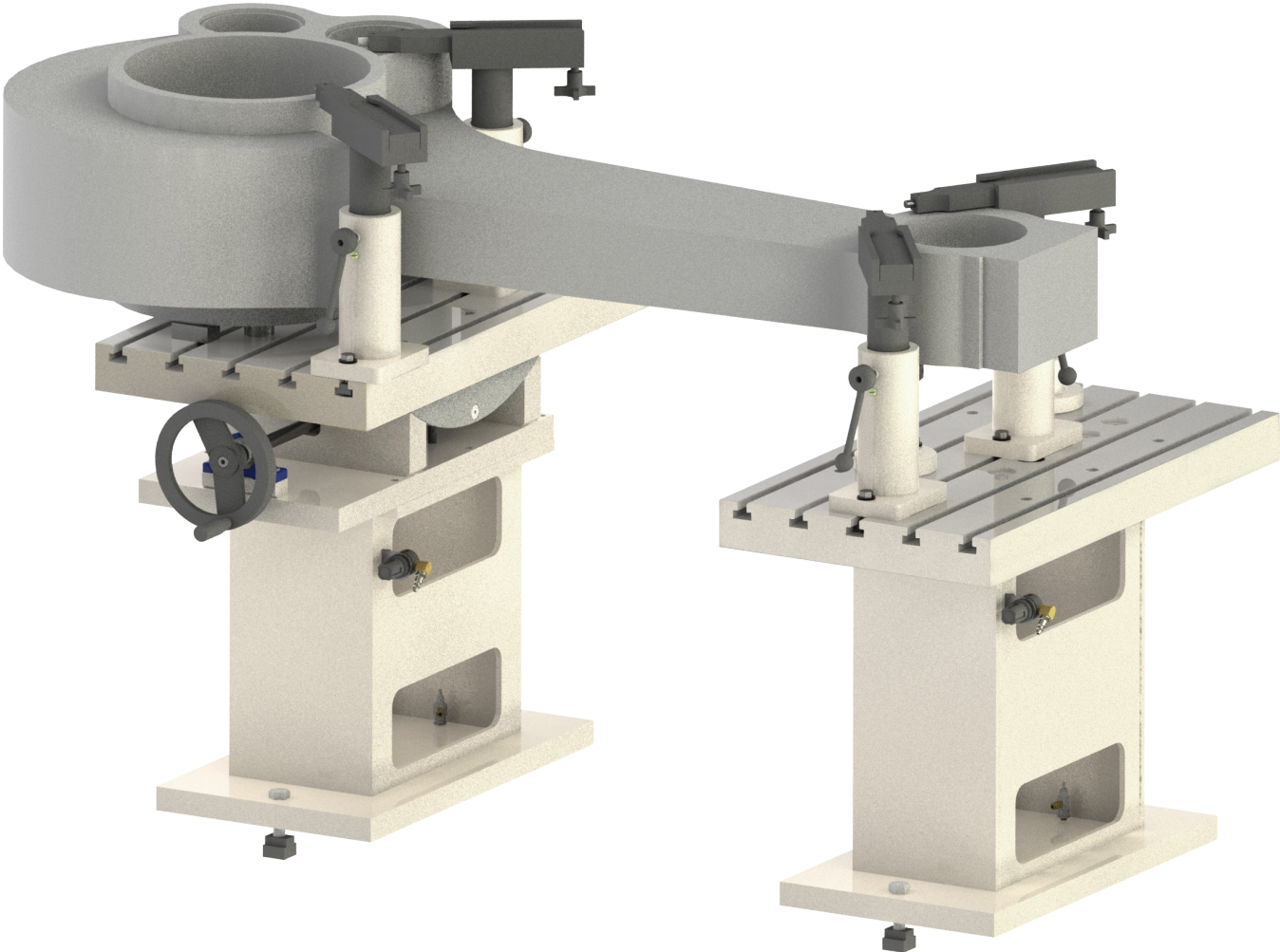




6870 LARGE CON ROD FIXTURE

OPERATION AND MAINTENANCE MANUAL



ORDERING PROCEDURE

Contact your regional Rottler sales rep for assistance in ordering optional equipment, replacement parts, or tooling.

If you are unable to contact your regional Rottler sales rep, call the factory at 253-872-7050 and ask to speak to the parts sales specialist.

Have the following information handy to expedite the ordering process:

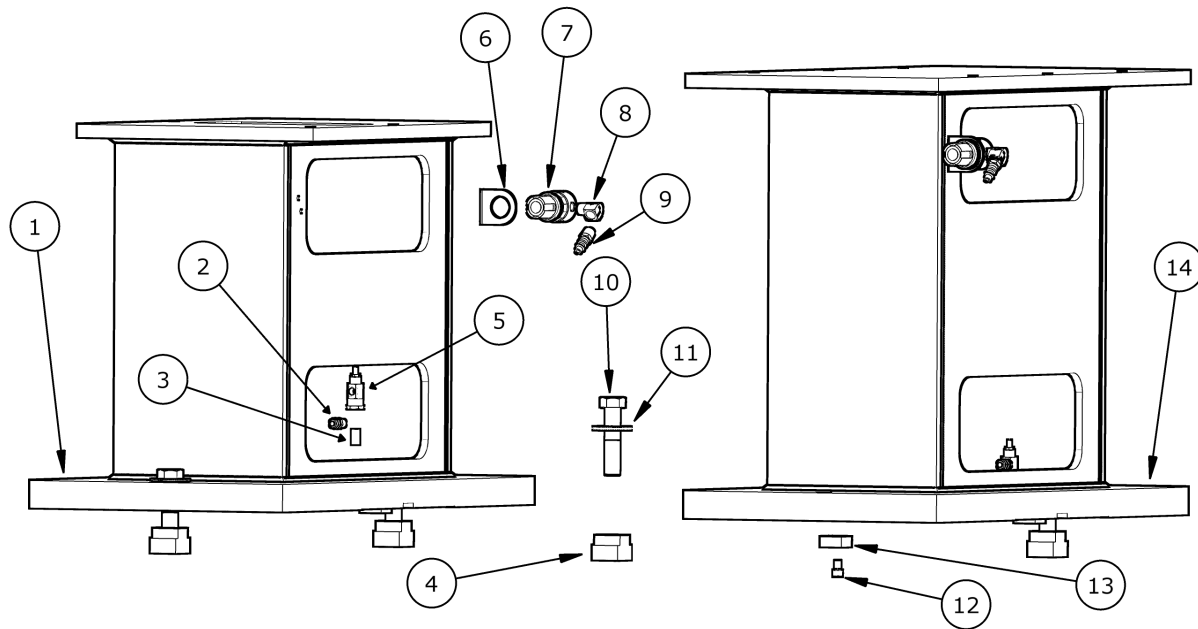
1. Your name, business name, and contact number
2. Customer number
3. If you don't have a customer number, your billing address
4. Shipping address if different from billing address
5. Machine model and serial number
6. Part number and description of what you want to order
7. Preferred method of shipment
8. You may also contact us via e-mail with the above information. Send e-mail requests to:
parts@rottlermfg.com or intlpart@rottlermfg.com

In some cases you may be requested to send a photo of the part you are ordering if it is a replacement part, or doesn't appear in the database.

If you are unsure which part you need to order, contact our service department and ask to speak to one of our service consultants. They will assist you in determining which part you require.

THERE IS A MINIMUM ORDER OF \$25.00

Support Table Parts



SUPPORT TABLE PARTS			
ITEM	PART NUMBER	DESCRIPTION	QTY
1	6872B	PIVOT TABLE SUPPORT	1
2	514-4-17W	FITTING 1/8 NPT X 1/4 POLY STRAIGHT	2
3	502-11-17J	NIPPLE,CLOSE 1/8" MPT	2
4	6160	NUT, "T"-HARDENED	4
5	502-11-35A	VALVE, CONTROL - RFC FLO	2
6	502-27-17A	BRACKET, MOUNTING - REGULATOR	2
7	502-27-17	REGULATOR,AIR 0-60 PSI	2
8	502-11-17S	ELBOW, ST, 1/4 FPT X 1/4 MPT	2
9	502-11-16X	CONNECTOR, MALE THREAD 1/4 NPTF V6/V8 FIXTURE	2
10		3/4 X 3 1/2 UNC HEX BOLT	4
11	MF-181A	FLAT WASHERS 3/4"	4
12		5/16 - 18 X 1/2 SHCS	2
13	6553K	KEY, LOCATOR	2
14	6871C	TABLE SUPPORT	1

Table, Jacks, and Clamps Parts

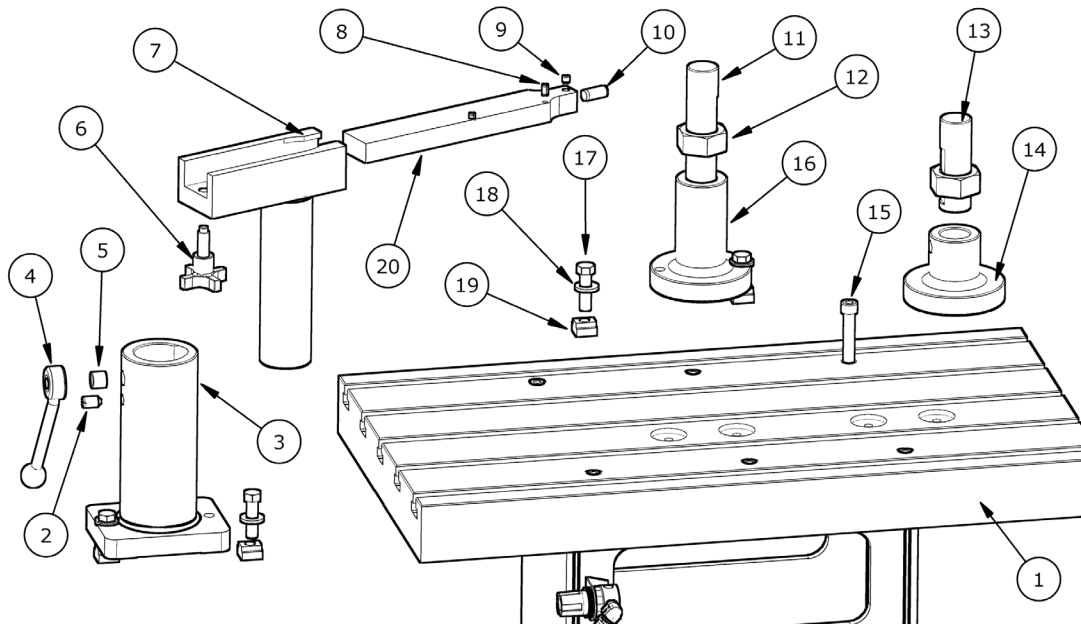
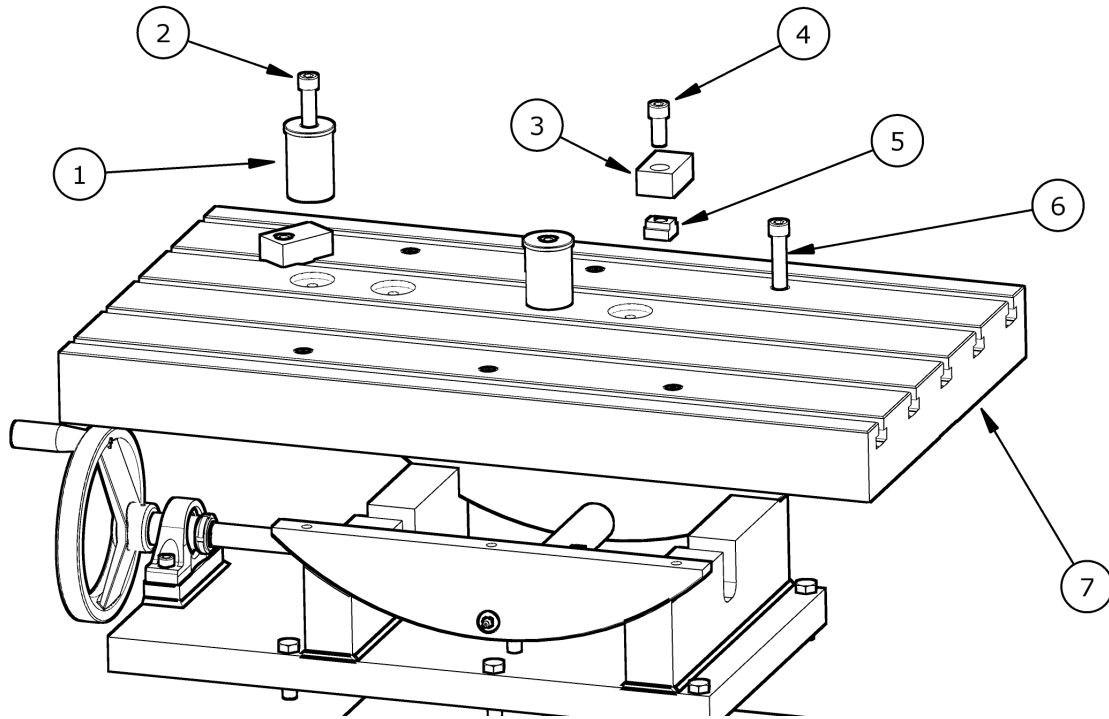


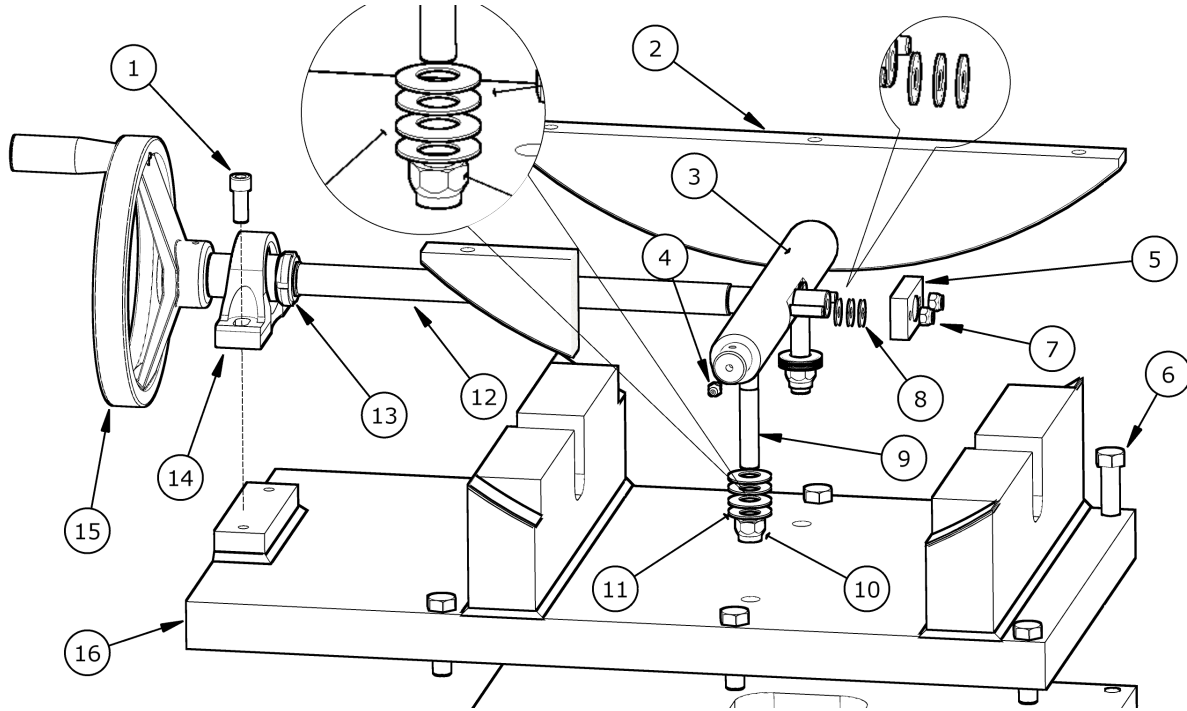
TABLE JACK AND CLAMP PARTS			
ITEM	PART NUMBER	DESCRIPTION	QTY
1	6871D	TABLE TOP	1
2	502-8-52C	PLUNGER, SPRING	4
3	6870C	CLAMP SUPPORT	4
4	6310J	HANDLE, ADJUSTABLE	4
5	6310R	INSERT, THREAD	4
6	6310K	HAND KNOB BLOCK CLAMP	4
7	6873	CLAMP LEG	4
8		SLOTTED SPRING PIN 1/4 X 1/2	8
9		CUP POINT SET SCREW 5/16 X 5/16	4
10		DOWEL PIN 1/2 X 1 1/4	4
11	6396	SCREW, JACKING-V BLOCK FIXTURE (7")	1
12	6566H	NUT, JACKING(2 1/2")	2
13	7241N	SCREW, JACKING-ECONOMY FIXTURE (4 3/4")	1
14	7241Q	JACK BODY	1
15		1/2 - 13 X 3 1/4 SHCS	6
16	6395E	JACK BODY	1
17	MF-149C	HEX BOLT 1/2-13 X 2	10
18	100-19A	WASHER, HARDENED 17/32" ID	10
19	650-3-10	T-NUT, 1/2-13 WITH 5/8" TABLE SLOT	10
20	6310H	SHOE, BLOCK CLAMPS	4

Pivot Table Parts



PIVOT TABLE PARTS			
ITEM	PART NUMBER	DESCRIPTION	QTY
1	6874E	LOCATOR	2
2		1/2 – 13 X 3 1/4	2
3	6874G	PARALLEL	2
4		1/2 – 13 X 1 1/4	2
5	650-3-10	T-NUT, 1/2-13 WITH 5/8" TABLE SLOT	2
6		1/2 – 13 X 3 1/4	6
7	6871D	PIVOT TABLE TOP	1

Pivot Base Assembly Parts



PIVOT ASSEMBLY PARTS			
ITEM	PART NUMBER	DESCRIPTION	QTY
1		3/8 – 16 x 1	2
2	6874C	PIVOT ARC	2
3	6874D	PIVOT SHAFT	1
4	MF-189	1/4-28 STRAIGHT GREASE FITTING	2
5	6874B	BACKLASH PLATE	1
6	MF-149C	HEX BOLT 1/2-13 X 2	6
7		1/4 – 20 NYLOK NUT	2
8	9024E	SPRING,BELLEVILLE	6
9	6874F	SET UP STUD	2
10		1/2 – 13 NYLOK NUT	2
11	514-7-21	WASHER, BELLEVILLE	8
12	6874	PIVOT SCREW	1
13	504-34-54	LOCKNUT	1
14	6871B	BEARING	1
15	6874A	HANDWHEEL	1
16	6872E	CRADLE	1