



# 6725 MID RANGE BLOCK FIXTURE

OPERATION AND MAINTENANCE MANUAL





## **ORDERING PROCEDURE**

Contact your regional Rottler sales rep for assistance in ordering optional equipment, replacement parts, or tooling.

If you are unable to contact your regional Rottler sales rep, call the factory at 253-872-7050 and ask to speak to the parts sales specialist.

Have the following information handy to expedite the ordering process:

1. Your name, business name, and contact number
2. Customer number
3. If you don't have a customer number, your billing address
4. Shipping address if different from billing address
5. Machine model and serial number
6. Part number and description of what you want to order
7. Preferred method of shipment

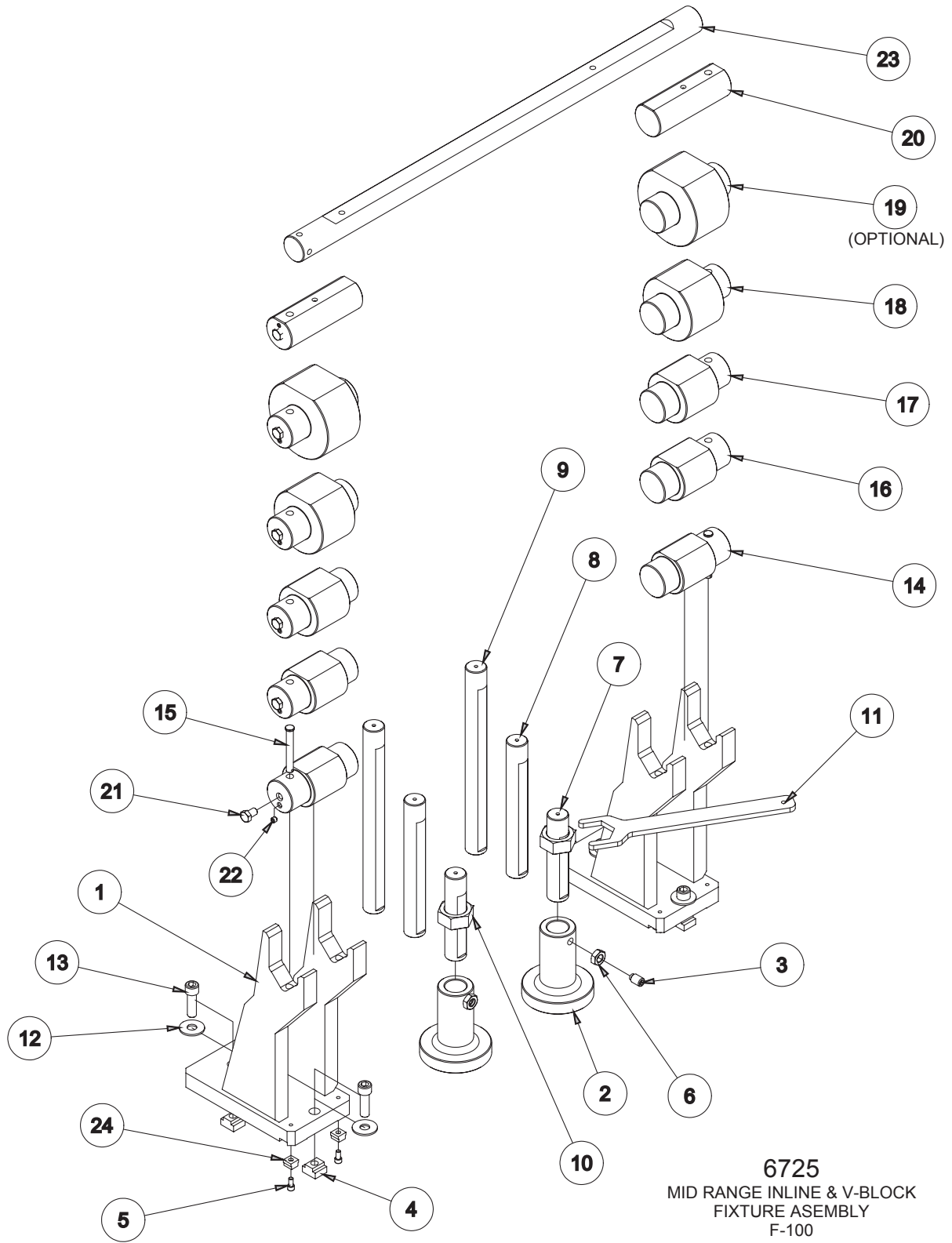
You may also contact us via e-mail with the above information. Send e-mail requests to: [parts@rottermfg.com](mailto:parts@rottermfg.com) or [intlpart@rottermfg.com](mailto:intlpart@rottermfg.com)

In some cases you may be requested to send a photo of the part you are ordering if it is a replacement part, or doesn't appear in the database.

If you are unsure which part you need to order, contact our service department and ask to speak to one of our service consultants. They will assist you in determining which part you require.

**THERE IS A MINIMUM ORDER OF \$25.00**





6725 MID RANGE INLINE & V-BLOCK FIXTURE ASSEMBLY - F100			
ITEM	QTY	PART NUMBER	DESCRIPTION
1	2	6553F	Machining, Main Bearing Support
2	2	6395D	JACK BODY
3	2	6395B	5/8-11 Half Dog 1" long
4	4	502-1-11A	3/4" T-Nut
5	4	MF-21	S.H.C.S. 5/16 - 18 UNC - 5/8
6	2	MF-173	5/8-11UNC HEX JAM NUT
7	2	6396	JACKING SCREW 7" LG.
8	2	6396A	JACKING SCREW 11-1/4" LG.
9	2	6396B	JACKING SCREW 15-1/2" LG.
10	2	6566H	Jacking Nut
11	1	6566K	WRENCH, JACKING NUT - DIESEL FIXTURING
12	4	MF-181	5/8" FLAT WASHER
13	4	MF-46D	S.H.C.S. 5/8 - 11 UNC - 2
14	2	6787C	LOCATOR, MAIN BEARING 3.22 TO 3.50 DIA.
15	2	6553H	PIN, LOCATION - DIESEL FIXTURE
16	2	6787D	Locator, main Bearing 3.50 to 4.00 dia.
17	2	6787E	Locator, main Bearing 4.00 to 5.00 dia.
18	2	6787F	Locator, main Bearing 5.00 to 6.00 dia.
19	2	6787G	Locator, main Bearing 6.00 to 7.00 dia. (OPTIONAL)
20	2	6787M	Locator, Main Bearing 2-1/2-3" dia.
21	10	MF-137E	1/2-13UNC x 3/4" LONG HEX BOLT
22	10	6788Q	SCREW, SET - BRASS TIPPED 3/8-16UNC x 5/16"
23	1	7241E	LOCATOR BAR, ECONOMY HEAD AND BLOCK FIXTURE
24	4	6869A	STEP KEY 3/4" - 5/8"