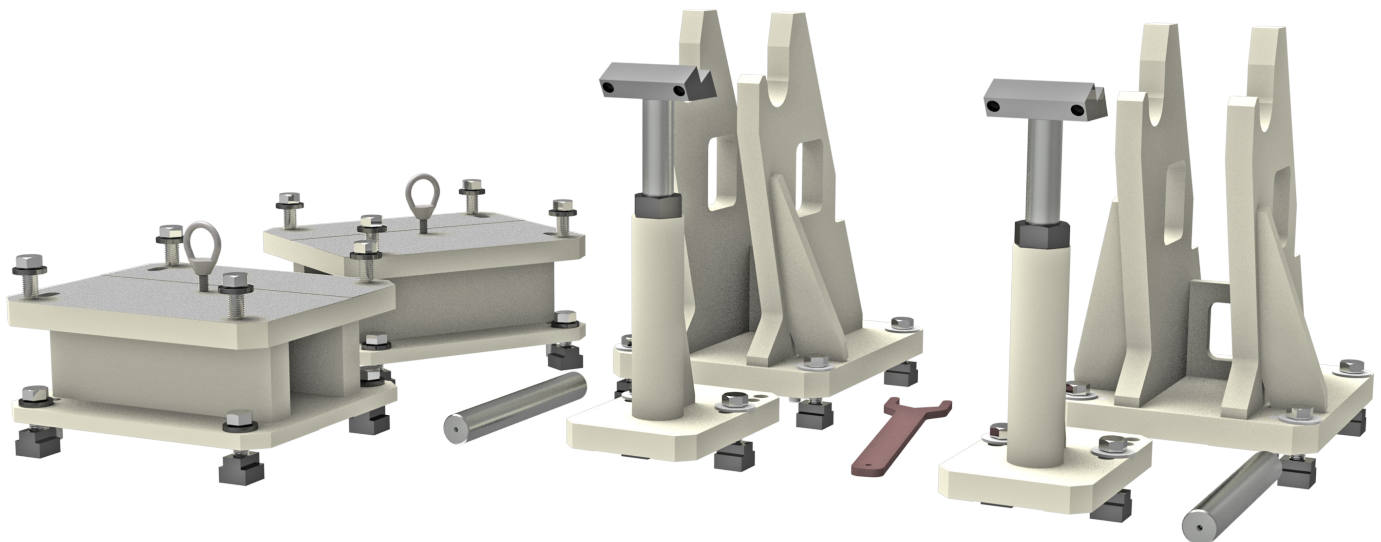




# 6405F LARGE V-BLOCK FIXTURE

OPERATION AND MAINTENANCE MANUAL





## **ORDERING PROCEDURE**

Contact your regional Rottler sales rep for assistance in ordering optional equipment, replacement parts, or tooling.

If you are unable to contact your regional Rottler sales rep, call the factory at 253-872-7050 and ask to speak to the parts sales specialist.

Have the following information handy to expedite the ordering process:

1. Your name, business name, and contact number
2. Customer number
3. If you don't have a customer number, your billing address
4. Shipping address if different from billing address
5. Machine model and serial number
6. Part number and description of what you want to order
7. Preferred method of shipment

You may also contact us via e-mail with the above information. Send e-mail requests to:  
[parts@rottermfg.com](mailto:parts@rottermfg.com) or [intlpart@rottermfg.com](mailto:intlpart@rottermfg.com)

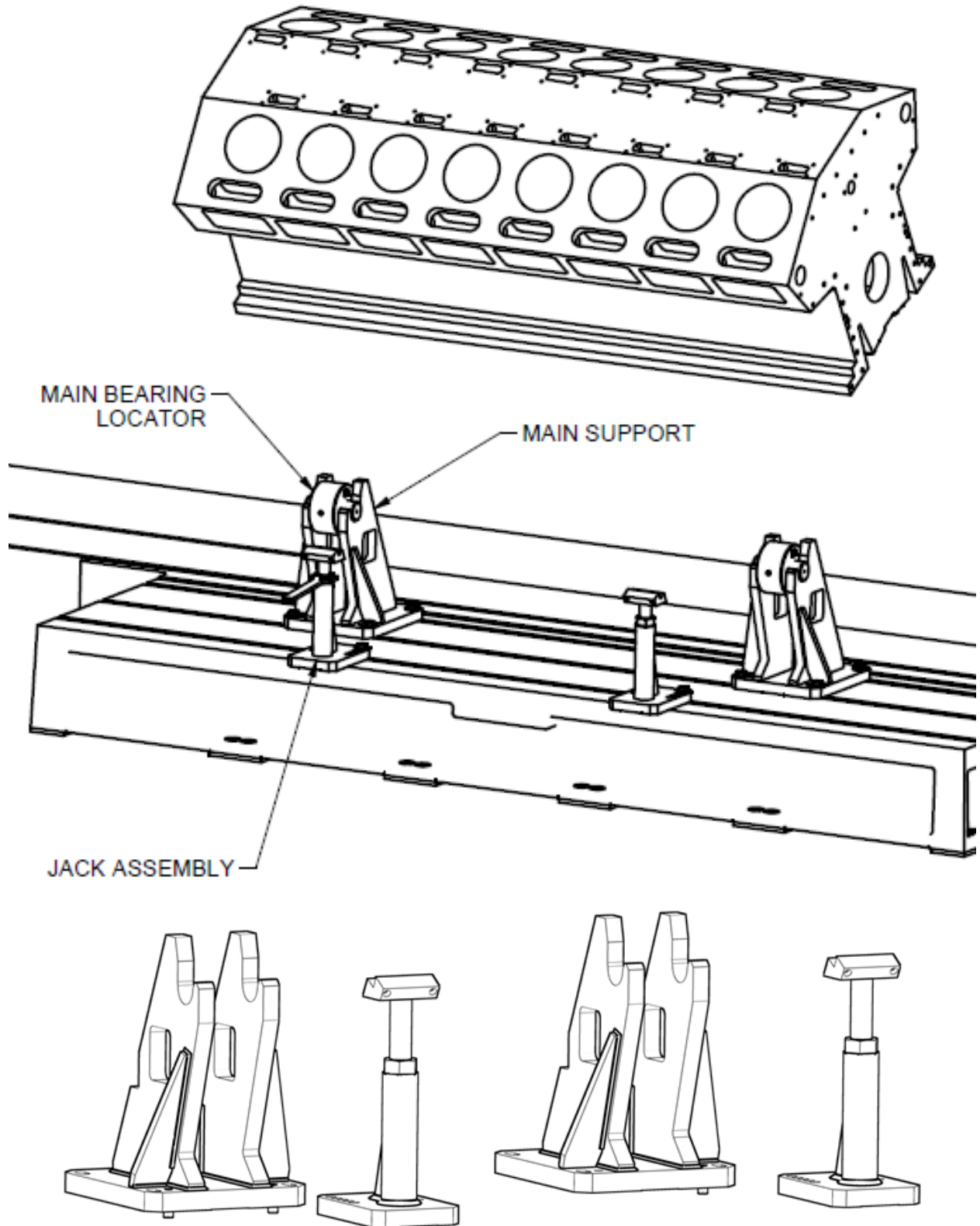
In some cases you may be requested to send a photo of the part you are ordering if it is a replacement part, or doesn't appear in the database.

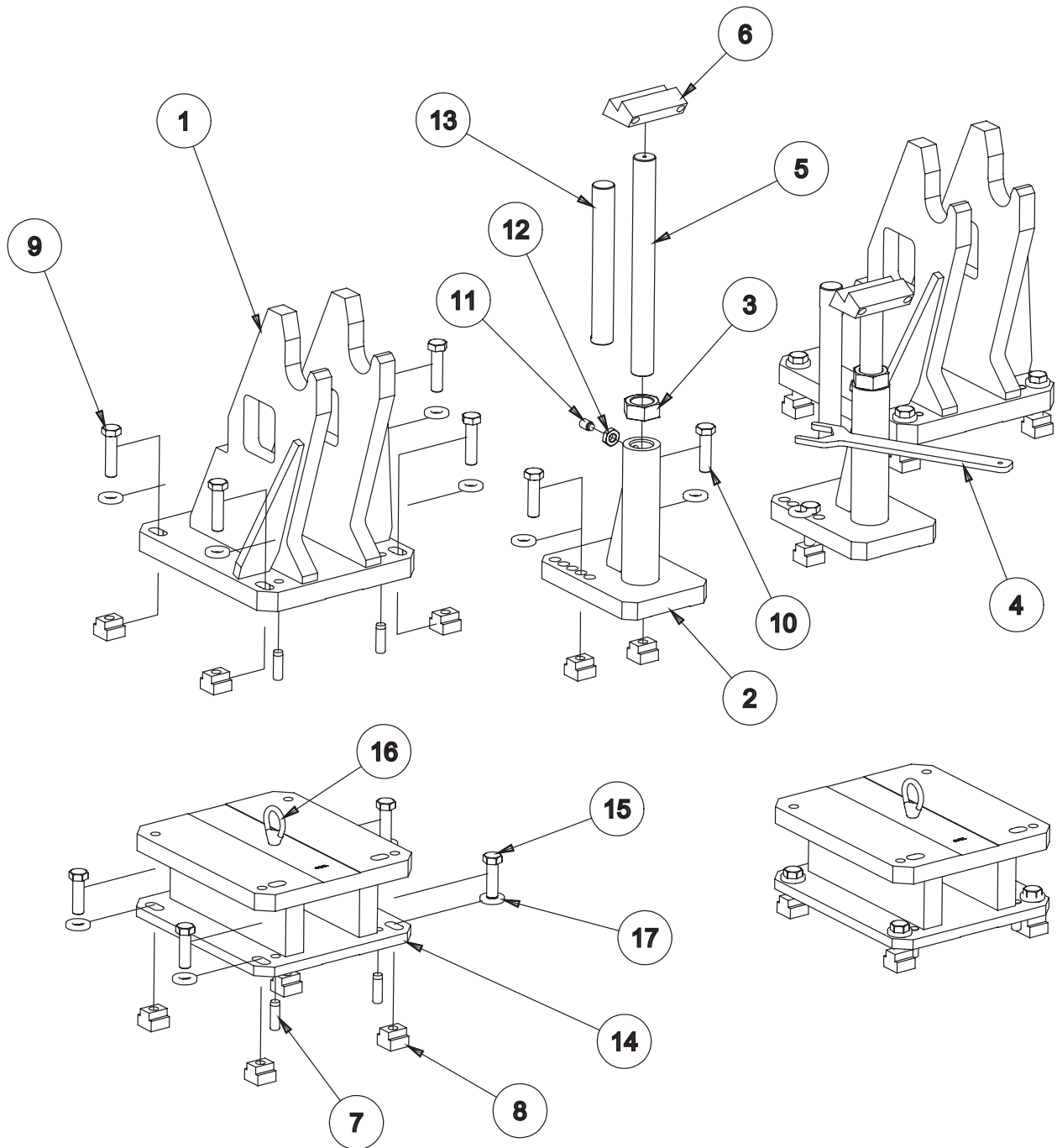
If you are unsure which part you need to order, contact our service department and ask to speak to one of our service consultants. They will assist you in determining which part you require.

**THERE IS A MINIMUM ORDER OF \$25.00**



### Setup





**6405F**  
LARGE DIESEL FIXTURE ASSEMBLY  
F90/F105

6405F LARGE V-BLOCK FIXTURE - F90/F105			
ITEM	QTY	PART NUMBER	DESCRIPTION
1	2	6405G	SUPPORT (MACHINING) LARGE V-BLOCK, UPPER BLOCK MACHINING - F90
2	2	6412A	JACK BODY (MACHINING) - 399 CAT BLOCK F80/90
3	2	6566H	Jacking Nut
4	1	6566K	WRENCH, JACKING NUT - DIESEL FIXTURING
5	2	6396B	Jacking Screw 15.5"
6	2	6413	Jacking Block
7	8	502-11-60	Dowel Pin 5/8 x 2
8	20	6160	Nut, T - Hardened
9	8	MF-154J	3/4-10UNC x 3" LG. HEX BOLT
10	4	MF-154H	3/4-10UNC x 2-3/4" LG. HEX BOLT
11	2	6395B	5/8-11UNC x 1" LG. HALF DOG SET SCREW
12	2	MF-173	5/8-11UNC HEX JAM NUT
13	2	6396A	JACKING SCREW - V-BLOCK FIXTURE 11.3" LG.
14	2	6405K	6" RISER (MACHINING), LARGE V-BLOCK FIXTURE - F100
15	8	MF-154C	3/4-10UNC x 2-1/2" LG. HEX BOLT
16	2	502-3-13	Lift Eye
17	20	6287	WASHER, THRUST 3/4"