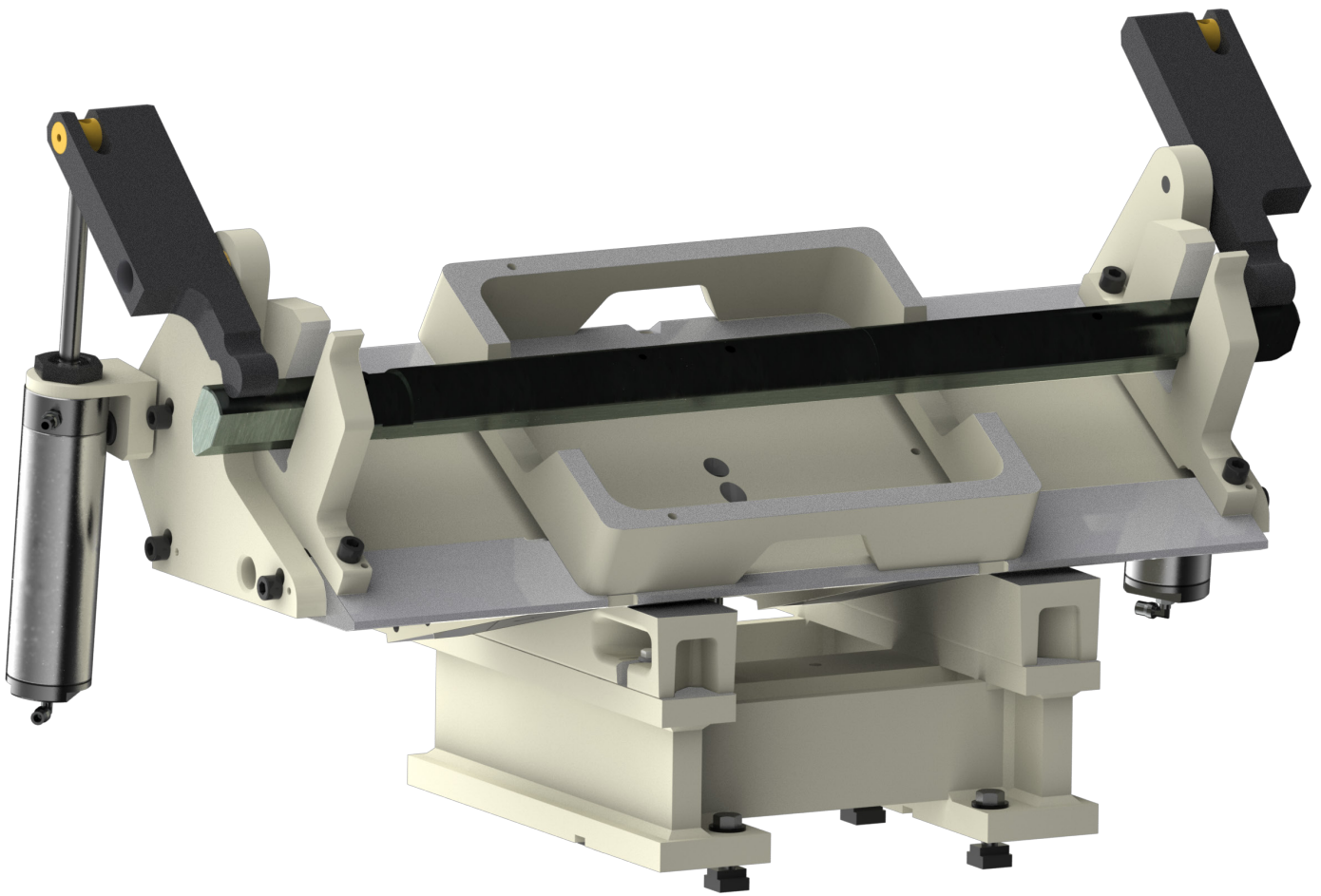




# 504-37-10 PRODUCTION V-BLOCK FIXTURE

OPERATION AND MAINTENANCE MANUAL





## **ORDERING PROCEDURE**

Contact your regional Rottler sales rep for assistance in ordering optional equipment, replacement parts, or tooling.

If you are unable to contact your regional Rottler sales rep, call the factory at 253-872-7050 and ask to speak to the parts sales specialist.

Have the following information handy to expedite the ordering process:

1. Your name, business name, and contact number
2. Customer number
3. If you don't have a customer number, your billing address
4. Shipping address if different from billing address
5. Machine model and serial number
6. Part number and description of what you want to order
7. Preferred method of shipment

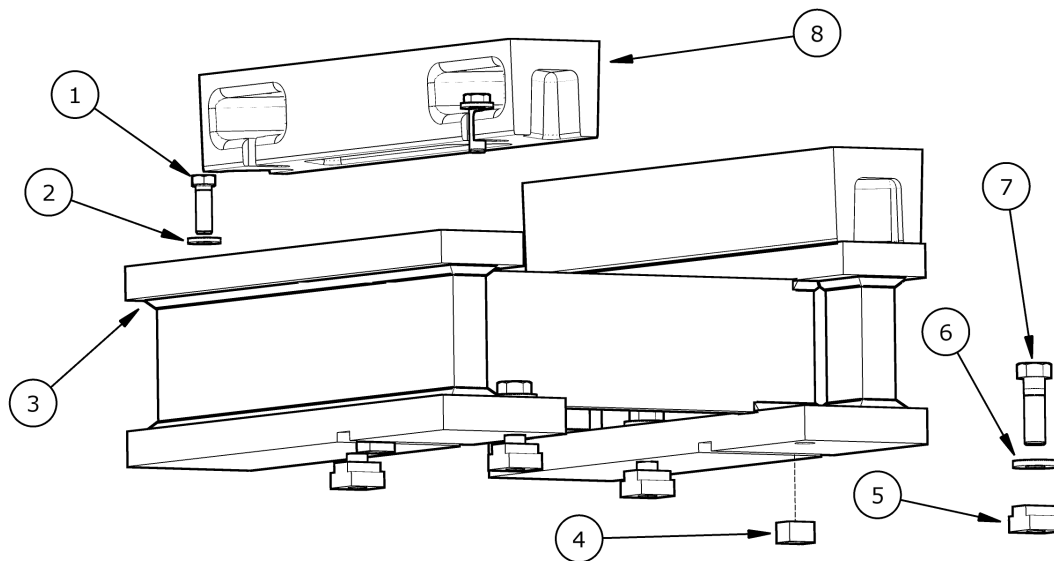
You may also contact us via e-mail with the above information. Send e-mail requests to:  
[parts@rottermfg.com](mailto:parts@rottermfg.com) or [intlpart@rottermfg.com](mailto:intlpart@rottermfg.com)

In some cases you may be requested to send a photo of the part you are ordering if it is a replacement part, or doesn't appear in the database.

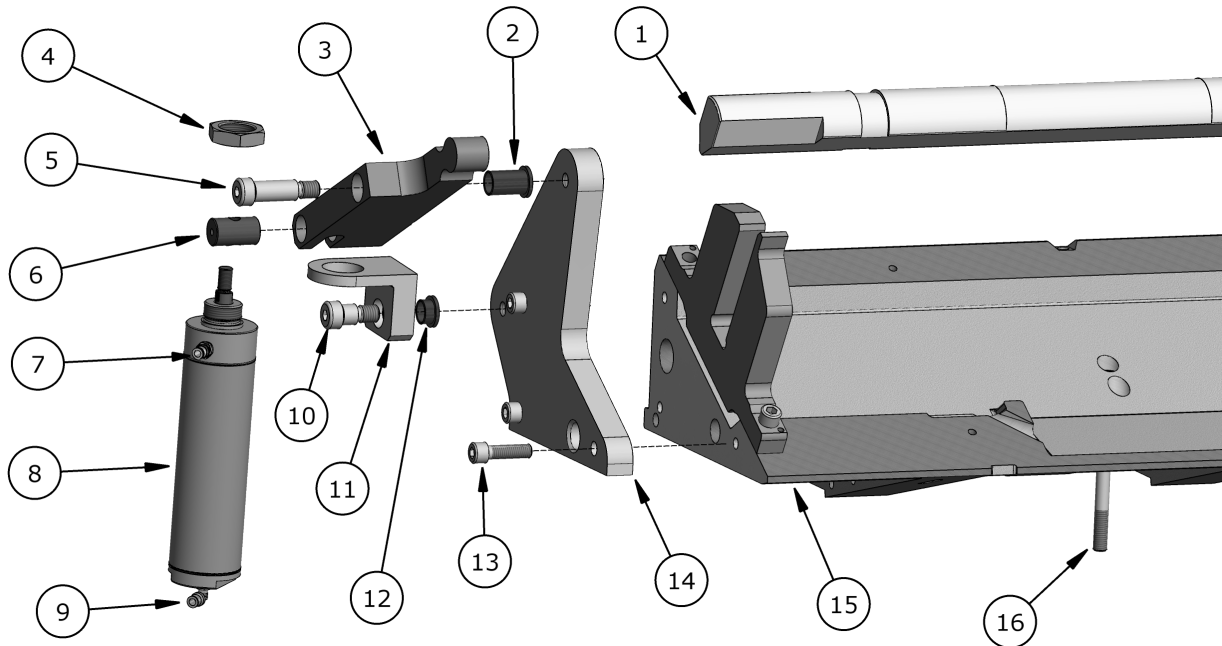
If you are unsure which part you need to order, contact our service department and ask to speak to one of our service consultants. They will assist you in determining which part you require.

**THERE IS A MINIMUM ORDER OF \$25.00**

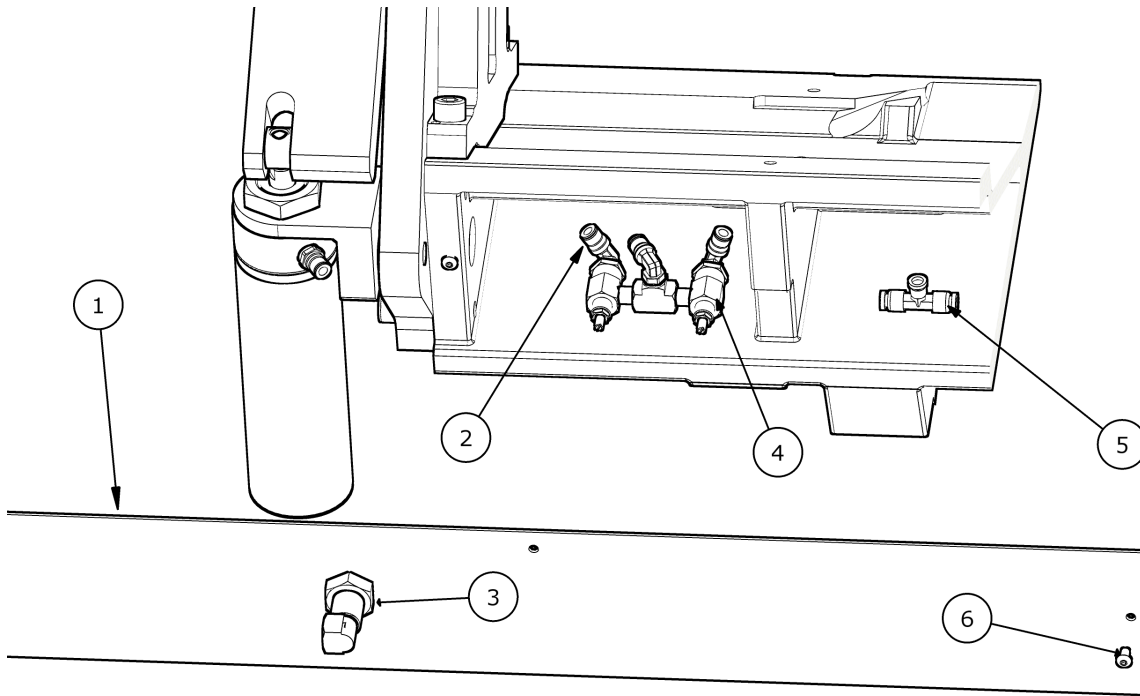




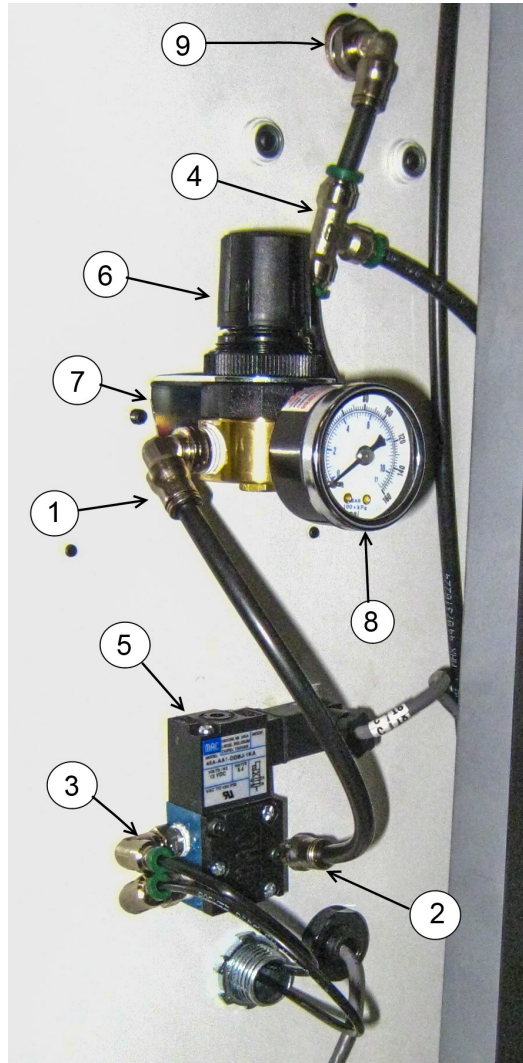
PARALLEL SYSTEM PARTS			
ITEM	PART NUMBER	DESCRIPTION	QTY
1		HEX HEAD BOLT 1/2-13 X 1 3/4	4
2	100-19A	HARDENED WASHER	4
3	504-37-4A	SUPPORT FRAME	1
4	650-3-9	GUIDE KEY	2
5	650-3-10	T-NUT	4
6		3/8 FLAT WASHER	4
7		HEX HEAD BOLT 3/8-16 X 1 1/4	4
8	502-1-21S	WEAR PAD ( SOLD IN PAIRS ONLY)	2



504-37-10 FIXTURE PARTS LEFT SIDE			
ITEM	PART NUMBER	DESCRIPTION	QTY
1	504-37-9	LOCATOR BAR	1
2	504-37-6E	PIVOT BEARING	1
3	504-37-6C	CLAMP ARM	2
4	504-37-8A	MOUNT NUT	2
5		SHOULDER SCREW 3/4 X 1 3/4	2
6	502-1-74Q	PIVOT PIN	2
7	514-4-17I	1/8" AIR FITTING	2
8	504-37-8	AIR CYLINDER	2
9	514-4-17d	1/8" AIR FITTING 90°	2
10		SHOULDER SCREW 3/4 X 5/8	2
11	504-37-7D	AIR CYLINDER MOUNT	2
12	504-37-6H	PIVOT BEARING	2
13	MF-44A	SHCS 1/2-13 X 1 3/4	6
14	504-37-7	CLAMP ARM SUPPORT	2
15	502-1-45X	V6/V8 FIXTURE	1
16		SHCS 1/2-13 X 6	1



AIR SYSTEM PARTS			
ITEM	PART NUMBER	DESCRIPTION	QTY
1	502-1-51	REAR COVER	1
2	514-4-17D	1/8" AIR FITTING 90°	2
3	502-2-26	3/8" CONDUIT FITTING 90°	1
4	502-11-35A	FLOW CONTROL VALVE	2
5	514-4-17P	1/8" TEE FITTING	2
6		BHSC 10-24 X 3/8	3
7	514-4-17A	1/8" AIR FITTING STRAIGHT ( NOT SHOWN )	2



FIXTURE CONTROL COMPONENTS			
ITEM	PART NUMBER	DESCRIPTION	QTY
1	514-4-17Y	FITTING 1/4NPT X 1/4 POLY-90°	2
2	514-4-17E	FITTING 1/8NPT X 1/4 POLY 90°	1
3	514-4-17D	FITTING 1/8NPT X 1/8 POLY 90°	2
4	514-4-17N	TEE, UNION 1/4 POLY	1
5	514-2-70M	CLAMP SOLENOID	1
6	502-27-17	PRESSURE REGULATOR	1
7	502-27-17A	BRACKET, PRESSURE REGULATOR	1
8	502-11-8	PRESSURE GAUGE	1
9	514-4-18B	FITTING 3/8 NPT X 1/4 POLY 90°	1



