

**NOTE:**  
 1 ANCHOR STUDS SHOULD 3/4 - 10 THREAD. AN OPTIONAL ANCHOR KIT IS AVAILABLE ROTTLER MANUFACTURING. SEE PAGE 2-12 OF THE MACHINE MANUAL FOR ANCHORING PROCEDURE RECOMMENDATIONS  
 2 NET WEIGHT OF MACHINE APPROXIMATELY 20,000 LBS  
 3 HEIGHT OF MACHINE, 141"  
 4 ENSURE ADEQUATE FOUNDATION SIZE AND REBAR LOCATION TO SUIT THE SPECIFIC SOIL CONDITIONS FOR THE AREA OF INSTALLATION  
 5 IT IS RECOMMENDED THAT THE AREA BETWEEN THE FRONT AND SIDES OF THE MACHINE AND THE EDGE OF THE PIT IS COVERED FOR SAFETY OF PERSONNEL. THESE COVERS ARE NOT PROVIDED BY ROTTLER MFG.

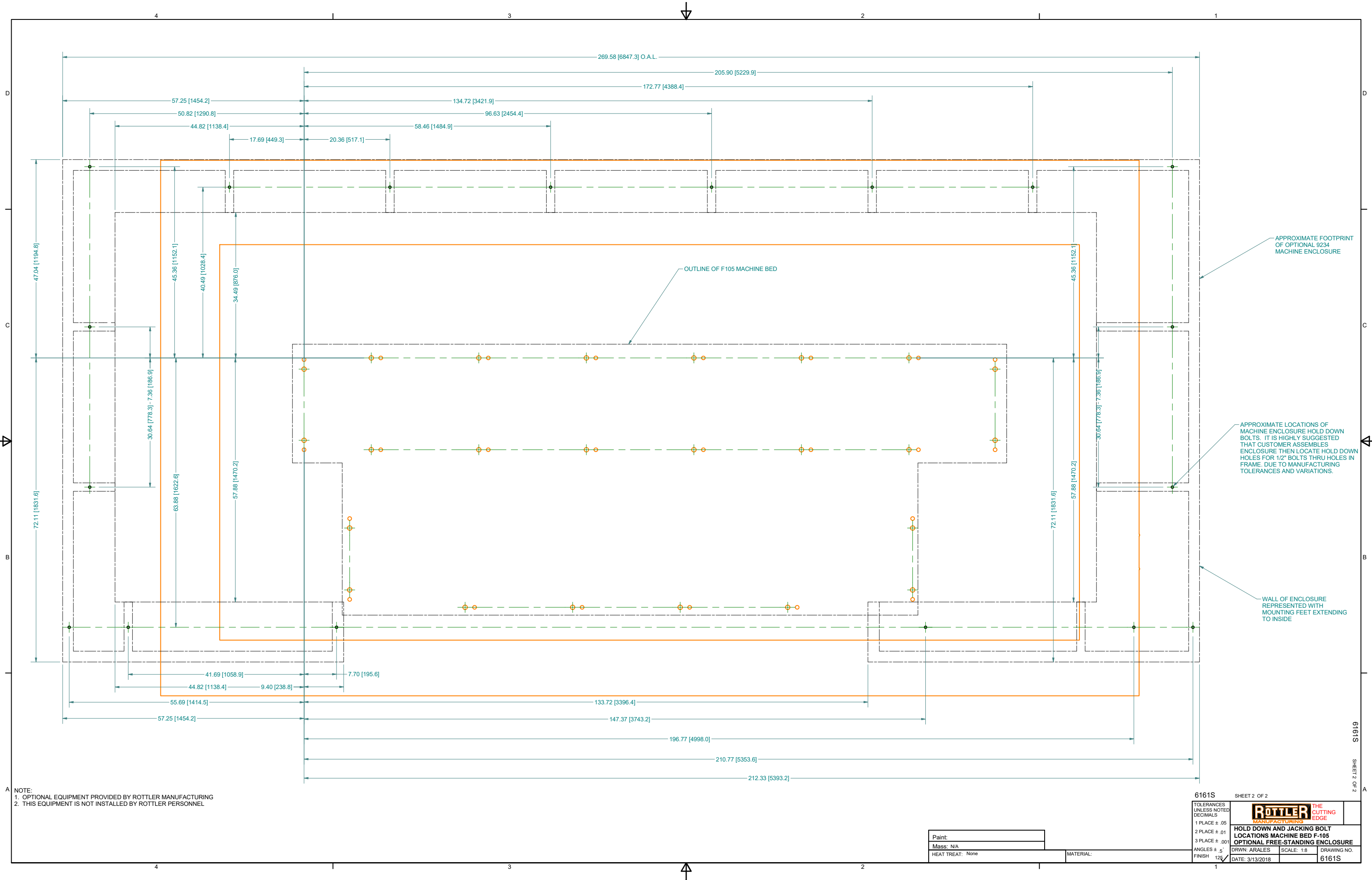
**POWER REQUIREMENTS:**  
**ELECTRICAL:**  
 208/240 VOLT  
 3 PHASE, 60 Hz  
 60 A SERVICE  
**LINE VOLTAGE VARIATION:**  
 ± 5% OF RATED  
 (CLOSED DELTA)  
**AIR:**  
 95/100 PSI  
 3C.F.M.

**Paint:**  
 Mass: 31151.231 lbmass  
 HEAT TREAT: None

**MATERIAL:**

6161S SHEET 1 OF 2  
**ROTTLER** THE CUTTING EDGE  
 MANUFACTURING  
**HOLD DOWN AND JACKING BOLT LOCATIONS, MACHINE BED EM105**  
 DRWN: ARALES SCALE: 1:8 DRAWING NO: 6161S  
 DATE: 3/13/2018

6161S SHEET 1 OF 2



NOTE:  
 1. OPTIONAL EQUIPMENT PROVIDED BY ROTTLER MANUFACTURING  
 2. THIS EQUIPMENT IS NOT INSTALLED BY ROTTLER PERSONNEL

Paint:  
 Mass: N/A  
 HEAT TREAT: None

MATERIAL:

6161S SHEET 2 OF 2	
TOLERANCES UNLESS NOTED DECIMALS	<b>ROTTLER</b> THE CUTTING EDGE MANUFACTURING
1 PLACE ± .05	HOLD DOWN AND JACKING BOLT LOCATIONS MACHINE BED F-105 OPTIONAL FREE-STANDING ENCLOSURE
2 PLACE ± .01	
3 PLACE ± .001	
ANGLES ± .5°	DRWN: ARALES
FINISH 12.5	SCALE: 1:8
	DATE: 3/13/2018
	DRAWING NO. 6161S

6161S SHEET 2 OF 2